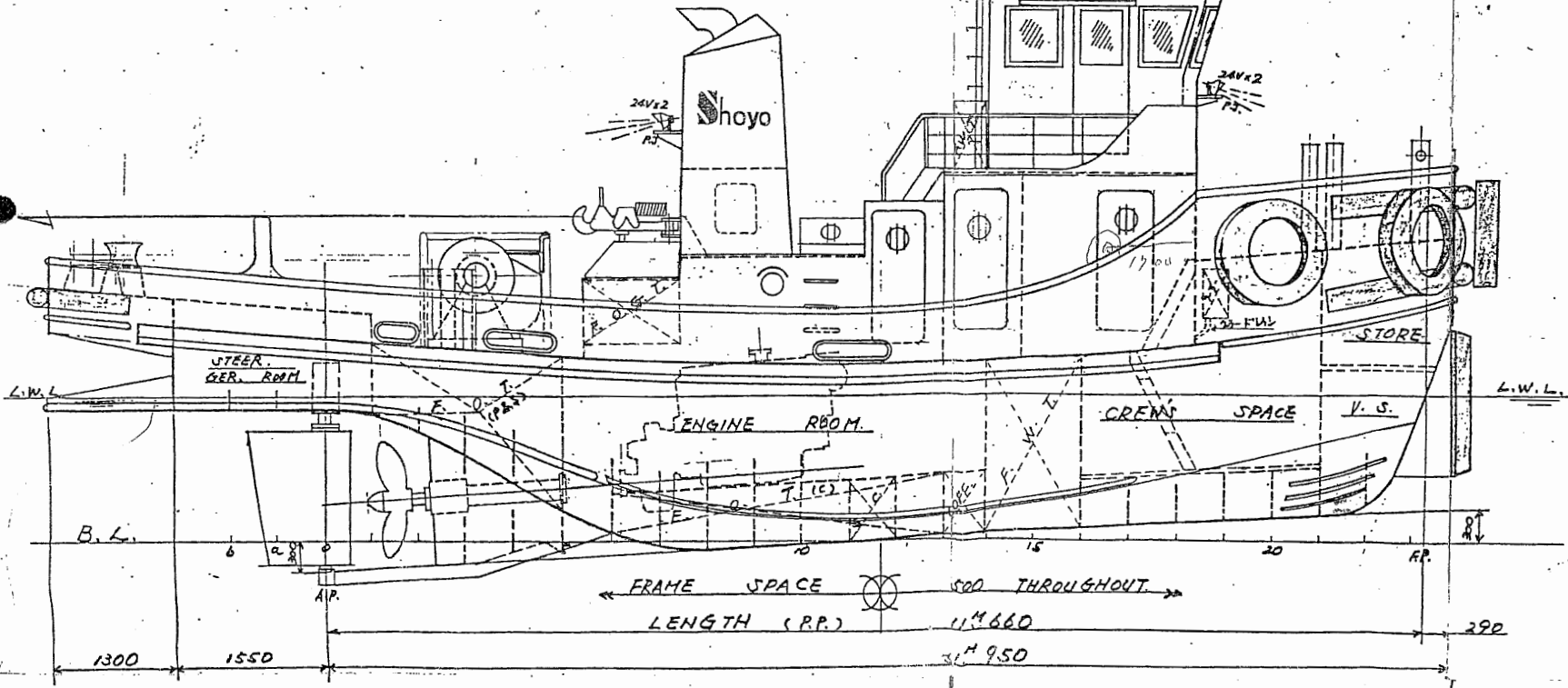
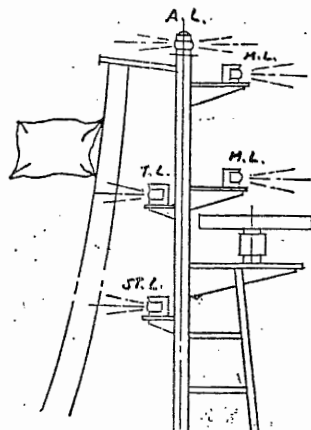
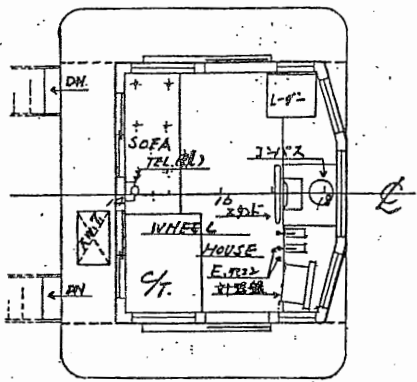
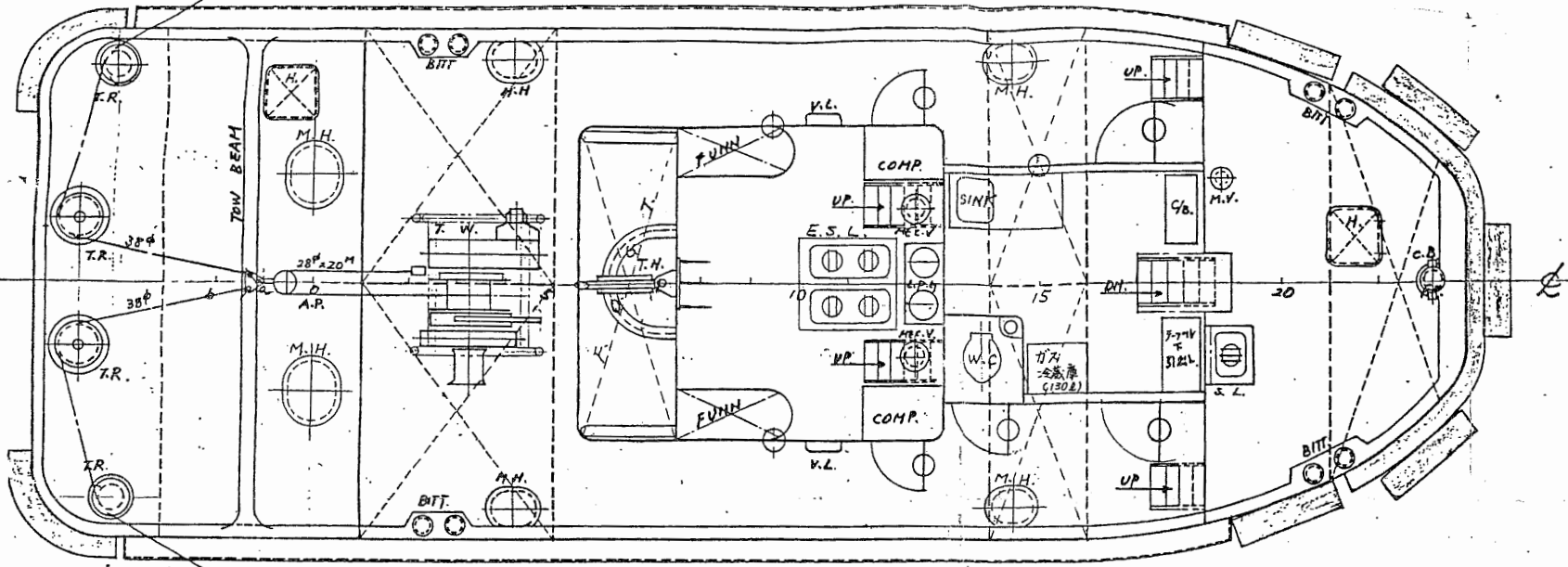


| PRINCIPAL DIMENSION | | |
|---------------------|--|-----------------|
| LENGTH (O.A.) | | 14.800 |
| " (L.R.) | | 11.950 |
| " (P.P.) | | 11.660 |
| BREADTH (MID) | | 5.050 |
| DEPTH (A) | | 1.800 |
| DRAFT (DESIGNED) | | 1.500 |
| MAIN ENGINE | | 500PS x 2 |
| GROSS TONNAGE | | 19T |
| COMPLEMENT | | 1P |
| PASSENGER | | 10P |
| NAV. AREA | | SEMI COAST AREA |
| CLASS | | J.C. I |
| SPEED | | AB. 10 KT. |

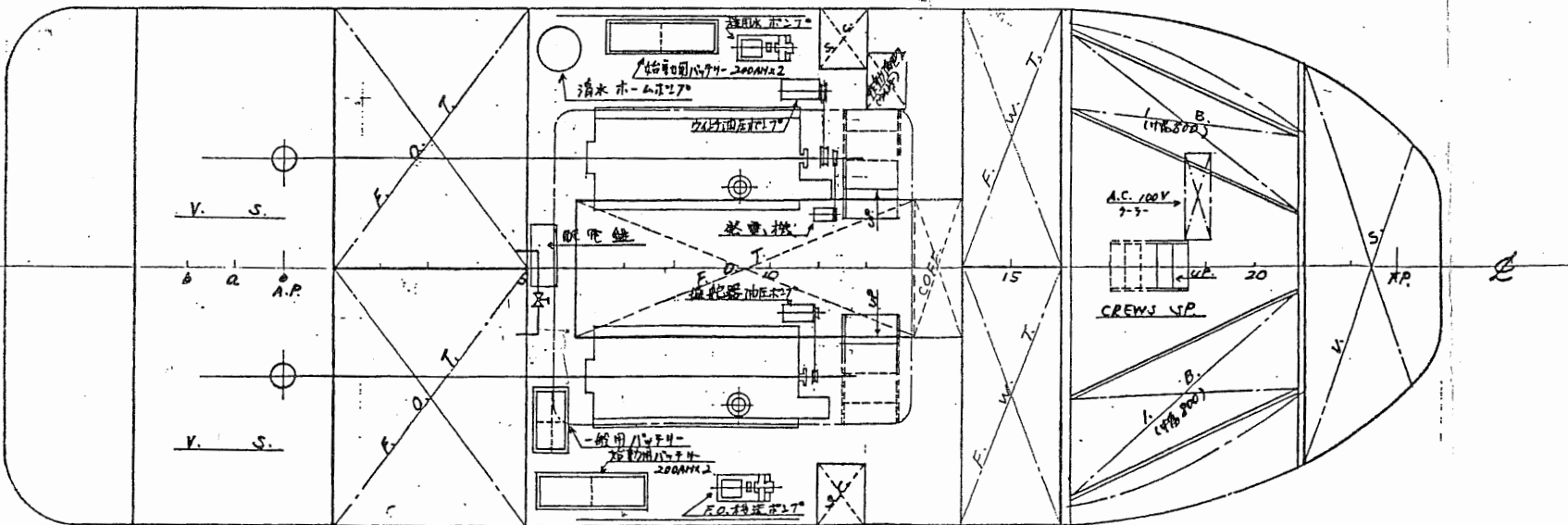
NAV. BR DE



DECK PLAN



BOTTOM PLAN



1994型曳船

一般配置図

尺度 1/50

兵庫県明石市港町16-6

宗田造船株式会社

電話(明石)912-3840

審査 設計 写図

M.N.

製図年月日 平成4年11月11日

番船

図面番号